

# ApneaRX™

Advancing the science of sleep



ApneaRX™ effectively reduces the detrimental health effects of mild to moderate apnea.  
ApneaRX™ is easy to use, comfortable and helps your patients to be compliant.  
ApneaRX™ is a cost effective sleep apnea therapy for you and your patients to save money.



**CareFusion**

*has joined BD*

Obstructive Sleep Apnea is an important public health problem<sup>1</sup>, having the highest prevalence in the general population of all sleep disorders.<sup>2</sup>

More than **500 Million** people suffer from **obstructive sleep apnea**.\*

The **majority of patients** are still **undiagnosed**.<sup>2</sup>

\* Up to 7% of the middle-aged male and 5% middle-aged female population suffers from obstructive sleep apnea.<sup>2</sup>



There is a high level of suffering amongst concerned persons AND their partners:



Excessive daytime sleepiness



Memory or learning problems and not being able to concentrate



Snoring and witnessed apneas



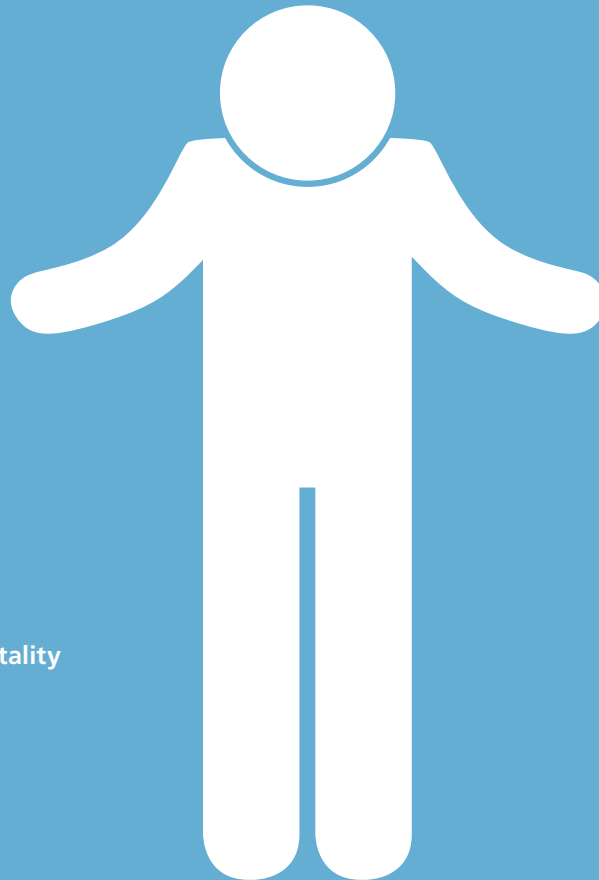
Feeling irritable, depressed, or having mood swings or personality changes



Increases mortality from traffic, domestic and work-related accidents



Dry mouth or sore throat when you wake up and morning headache



Left untreated, obstructive sleep apnea can increase the risk of high blood pressure, heart attack, stroke, obesity and of developing diabetes.<sup>3, 4, 5, 6, 7</sup>

# Therapy options for patients with obstructive sleep apnea

## CPAP



- + Effective
- Low comfort
- High costs
- Up to 50% of the patients become non adherent to CPAP due to noise and other negatives

## ApneaRX™



- + Effective
- + Easy to use due to control fit
- + Affordable
- + Helps patients to be compliant

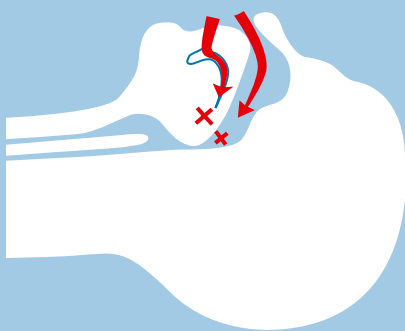
Clinical studies prove that both devices achieve consistent results.<sup>8</sup>

BUT the majority of patients prefers the ApneaRX™.<sup>9</sup>

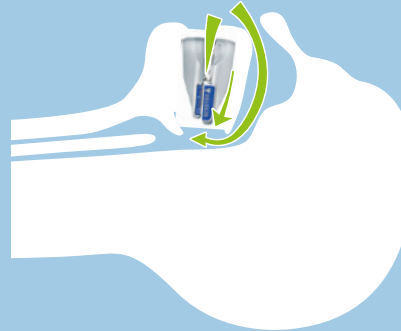
Be economic and choose the device which helps your patient to be compliant.

## Mandibular Advance Technology

ApneaRX™ uses the mandibular advance technology to gently hold your patient's lower jaw in a slightly forward position.



Without ApneaRX™



With ApneaRX™

ApneaRX™ helps your patients and their partners to live a better and healthier life

- Opens airway at night
- Improves breathing
- Reduces snoring

- Results in better nights sleep
- Eliminates daytime drowsiness
- No longer feeling tired all the time

Greatly reduces the detrimental health effects of mild to moderate apnea!



## Key Features

### Comfort-Fit™

Thermally molded to patient's mouth in 10 minutes.

### Advanced Design™

Simple unaided mechanism to adjust and maintain jaw position.

### Micro-Fit™

Easy to read one millimeter jaw adjustment for more comfort and clinical efficacy.



### V-Flow™

Assures full air flow and device alignment for stability and better fit.

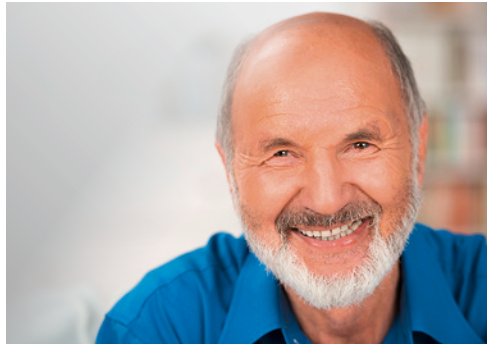
### Posi-Lock™

Jaw position can be set and relocked at anytime.

ApneaRX™ is engineered to be as comfortable as possible – fully adjustable at any time in 1 mm increments



Designed with your patient in mind



The ApneaRX™ is available in two different sizes to comfortably fit your patients' needs

**75%** of the users

- Slept better
- Snored less
- Felt more refreshed than usual<sup>9</sup>



Over **60%** of the users


responded that the device significantly lowered their apnea-hypopnea index number



Help your patients live better.  
ApneaRX™ – easy to use, effective and economically smart

## References

- 1 Fietze, I. Prenzel, T., Alonderis, A. et al. Management of obstructive sleep apnea in Europe. *Sleep Med.*, 2011, 12: 190–197.
- 2 *Sleep Medicine* 12 (2011) 190–197. Special Section in Sleep Medicine. Management of obstructive sleep apnea in Europe. I. Fietze, T. Penzel, A. Alonderis, F. Barbe, M.R. Bonsignore, P. Calverly, W. De Backer, K.A. Franklin, T. Gislason, L. Grote, J. Hedner, P. Jennum, L. Lavie, P. Lavie, P. Levy, C. Lombardi, W. Mallin, O. Marrone, J.M. Montserrat, E.S. Papathanasiou, G. Parati, R. Plywaczewski, M. Pretl, R.L. Riha, D. Rodenstein, T. Saaresranta, R. Schulz, P. Sliwinski, P. Steiropoulos, J. Svaza, Z. Tomori, P. Tonnesen, G. Varoneckas, J. Verbraecken, J. Vesely, A. Vitols, J. Zielinski, W.T. McNicholas, On behalf of the COST Action B26 Group.
- 3 *J. Sleep Res.* (2012) 21, 139–146 Proteomic Changes in Apnea. Serum proteomic changes in adults with obstructive sleep apnoea. Bernabe Jurado-Gamez, Jose Luis Gomez-Chaparro, Maria Muñoz-Calero, Antonio Serna Sanz, Luis Muñoz-Cabrera, Juan Lopez-Barea and David Gozal.
- 4 Garvey, J.F., Taylor, C.T. and McNocholas, W.T. Cardiovascular disease in obstructive sleep apnoea syndrome: the role of intermittent hypoxia and inflammation. *Eur. Respir. J.*, 2009, 33:1195–1205.
- 5 Gottlieb, D.J., Yenokyan, G., Newman, A.B. et al. Prospective study of obstructive sleep apnea and incident coronary heart disease and heart failure. *The Sleep Heart Health Study. Circulation*, 2010, 122:352–360.
- 6 Lavie, L. and Lavie, P. Molecular mechanisms of cardiovascular disease in OSAHS: the oxidative stress link. *Eur. Respir. J.*, 2009, 33: 1467–1484.
- 7 Yaggi HK, Concato J, Kernan WN, Lichtman JH, Brass LM, Mohsenin V, authors. Obstructive sleep apnea as a risk factor for stroke and death. *N Engl J Med.* 2005;353:2034–41.
- 8 Almeida FR. Long-term effectiveness of oral appliance versus CPAP therapy and the emerging importance of understanding patient preferences. *SLEEP* 2013;36(9):1271–1272.
- 9 Dennis Hwang et al (2013): Feasibility Pilot Evaluating the Use of Pre-Fabricated Titratable Mandibular Advancement Device for Management of Obstructive Sleep Apnea. Kaiser Permanente Fontana Sleep Center/School of Medicine, New York University

 Apnea Sciences Corporation  
27121 Aliso Creek Road #140  
Aliso Viejo, CA 92656



USA –  
Distributed by:  
CareFusion  
Order and Customer Support  
Toll Free: 800 582 7458  
Fax: 217 521 1399  
tiarasales@carefusion.com

International –  
Exclusively distributed by:  
CareFusion Germany 234  
GmbH  
Leibnizstrasse 7  
97204 Hoechberg  
Germany  
+49 931 4972-0 tel  
+49 931 4972-423 fax



EMERGO Europe  
Molenstraat 15  
2513 BH The Hague  
The Netherlands

© 2015 CareFusion Corporation or one of its affiliates. All rights reserved. CareFusion and the CareFusion logo are trademarks or registered trademarks of CareFusion Corporation or one of its affiliates. All rights reserved.  
ApneaRX is a trademark or registered trademark of Apnea Science Corporation.  
All trademarks are property of their respective owners.  
V-791074 0000CF02633 Brochure ApneaRX™, EN

